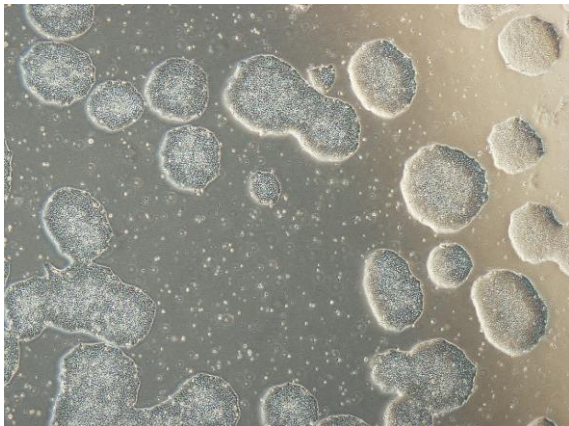
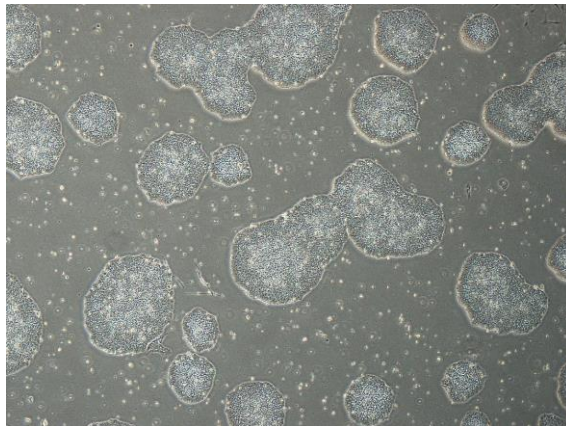


【 CiRA-j-1244 】 Morphology of iPSC colonies

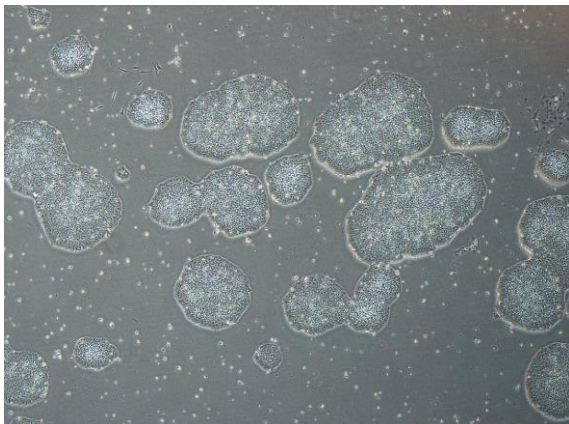
CiRA-j-1244-A: passage-3



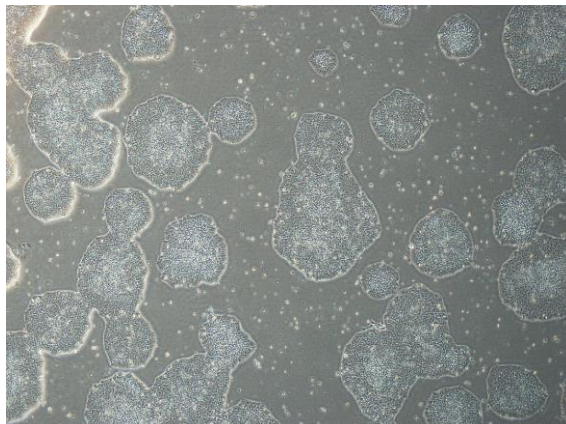
CiRA-j-1244-B: passage-3



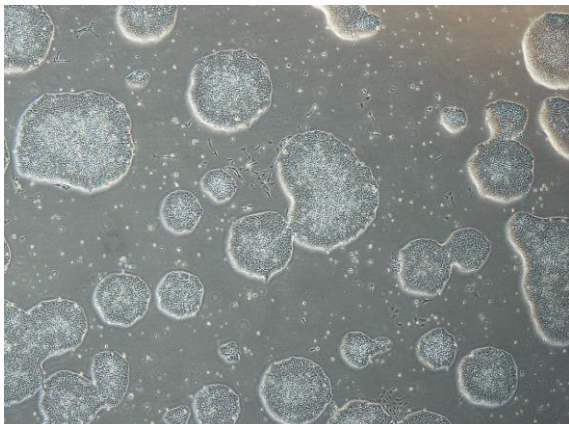
CiRA-j-1244-C: passage-3



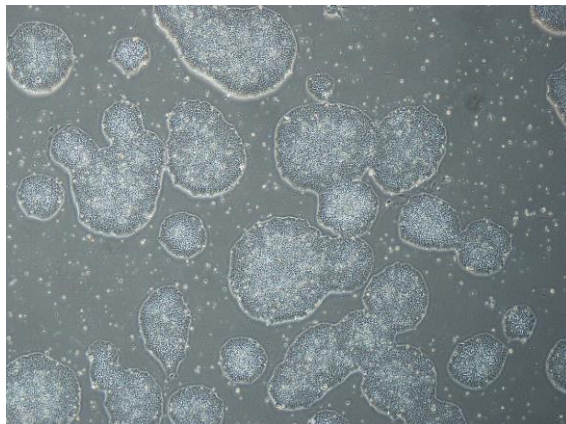
CiRA-j-1244-D: passage-3



CiRA-j-1244-E: passage-3



CiRA-j-1244-F: passage-3



(All images were captured at 4x magnification)